



# OptimDBS

## Clinician User Guide

Review 1

April 2021

This document explains how to retrieve and use during surgery marked MRI with brain targets processed by OptimDBS, a stand-alone software developed by RebrAIn.

It is recommended that you read this user guide carefully before use.



The instructions for use (in French and English) can be downloaded on the RebrAIn website: <https://rebrain.eu/> or on a specific web interface made available to clinicians.



OptimDBS is a CE marked medical device qualified as class I.  
It complies with the requirements of the European Directive 93/42/EEC on medical devices.



RebrAIn  
Plateforme Technologique d'Innovation Biomédicale (PTIB)  
Hôpital Xavier Arnoz, Avenue du Haut Lévêque  
33600 PESSAC cedex

## **2. Description of OptimDBS**

OptimDBS is a semi-automatic stand-alone software application that helps clinicians with surgery planning. From a cerebral MRI of the patient in DICOM Format, OptimDBS outputs an MRI with visual indicators at the predicted target coordinates to offer a solution for functional stereotactic targeting in order to add confidence to the clinician's targeting method.

Deep brain stimulation (DBS) is a type of surgical treatment for neurodegenerative diseases such as Parkinson's disease and essential tremor. A crucial step in this procedure is the identification of the brain targets where current is to be delivered through implanted electrodes to alleviate the patient's symptoms. Gamma-knife therapy (radiosurgery, RS) or thermal lesion (high intensity focused ultrasound, HIFU) are other surgical treatments that use the same type of targeting to locate the positions at which controlled lesions need to be delivered.

OptimDBS can predict specific brain targets to support the clinician in their usual targeting method during surgical procedures. The software application is exclusively used by qualified RebrAIn operators. Once the clinician has provided to RebrAIn with an anonymized MRI image in DICOM format, the operator can process it with OptimDBS. OptimDBS outputs an MRI image with visible markers (white crosses) where the predicted targets are located, which is then sent back to the clinician to assist them during the surgical procedure.

The output image provided by OptimDBS shall in no circumstance be used as the clinician's targeting method. It shall only be used as an additional source of information for the clinician to either increase their confidence in their usual targeting methods or prompt further verifications at the clinician's own discretion.

## **3. Intended use of OptimDBS**

### **Intended Use**

OptimDBS is a stand-alone software application intended to provide a standardized method of neurosurgery stereotaxic target visualization by using prediction algorithms for the treatment of Parkinson's disease and essential tremor. From a cerebral MRI of the patient, it outputs an MRI in standard DICOM format with visual indicators at the predicted target coordinates which are meant to be used by the clinician as a cross-comparison tool to increase confidence in their usual targeting methods.

### **Patient Population**

OptimDBS is indicated for patients with Parkinson's disease or essential tremor eligible for surgical indication (DBS, lesions surgery). Patient eligibility is the responsibility of the clinician who is following the patient.

### **Intended user**

The marked MRI images that have been processed by OptimDBS are intended to be used by the clinician who performs the neurosurgical intervention.

### **Contraindications**

There is no contraindications when using marked MRI images processed by OptimDBS.


### **Undesirable side effects**

No adverse effects are expected when using the MRI images marked with predicted brain targets.

**Responsibility**

The images processed by OptimDBS only provide additional assistance to clinicians. They do not replace or substitute standard targeting methods.

**4. Warning**

	ATTENTION
	<ul style="list-style-type: none"> <li>▪ The marked MRI image should be used by qualified healthcare professionals with skills in medical imaging and neurosurgery.</li> <li>▪ Images processed by OptimDBS only provide additional help to clinicians. They do not replace or substitute the usual targeting methods.</li> <li>▪ The marked MRI image should be used by the clinician only as a cross-comparison tool to increase confidence in their usual targeting methods and to secure the surgical procedure.</li> <li>▪ The quality and accuracy of the marked MRI images strongly depend on the quality of the provided MRI. Therefore, an MRI with good quality and contrast is needed.</li> <li>▪ All MRIs sent to RebrAln for targeting process must be pseudonymized. In case of anonymization issues, the files provided will be erased from our databases and you will be required to upload your files again.</li> <li>▪ Patient name and date verification require a special attention from the clinician, especially after the de-anonymization process.</li> <li>▪ Patient eligibility and choice of surgical procedure are the responsibility of the patient’s clinicians.</li> <li>▪ When using the marked MRI image as a cross-comparison tool during surgery, the clinician should verify the sides and quality of the fused images.</li> <li>▪ Clinicians should submit a request for MRI processing at least one day before the scheduled surgery date.</li> </ul>

**5. Precautions**

**5.1. Compliant use**

The use of these marked MRI images processed by OptimDBS is reserved for clinician planning to perform a neurosurgical intervention for the treatment of patients with Parkinson's disease or Essential Tremor by targeting the subthalamic nucleus, STN, or the ventral intermediate nucleus, VIM.

Any inappropriate use is prohibited.

## 5.2. Application for MRI marking

Uploading MRI images of a patient and downloading MRI images marked with predicted targets can be done using an appropriate web interface. The credentials sent by RebrAIn must be used to log in.

A manual concerning the use of the web interfaces is sent to each clinician when they log in for the first time.

However, the following information must be provided during the request:

- The brain target: STN or VIM;
- The hemisphere to be targeted in case of unilateral marking.



**Warning: If the hemisphere is not indicated, bilateral marking will be performed by the RebrAIn operators**

## 5.3. Malfunction

For any problems related to loading/downloading MRI images or if the marked MRI image:

- is incompatible with the planning station used during neurosurgery.
- is non available or;
- show a discrepancy between the targets obtained during the clinician's usual targeting and the targets obtained on the MRI image processed by OptimDBS,

please send an e-mail to: support@rebrain.eu.

In case of a problem with the marked image processed by OptimDBS (see above), clinicians must operate the patient according to their own clinical protocol.

## 6. Instructions for use

### 6.1. Pseudonymization of MRIs

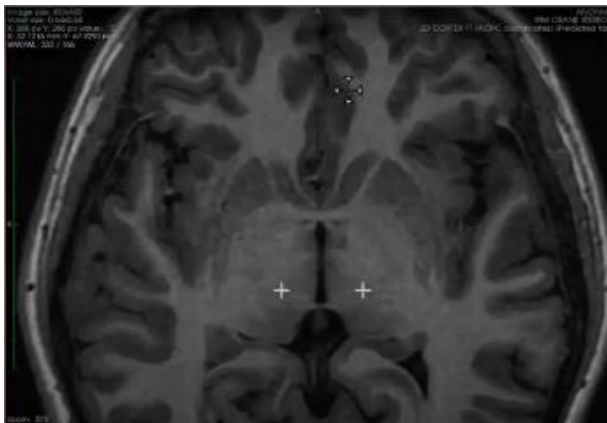
It is required to pseudonymize a patient's MRI. This can be done by using your own anonymization process or by using open-source tools or software dedicated to MRI anonymization.

The de-anonymization process and the cross-referencing of patient data are the responsibility of the clinician and/or the hospital.

### 6.2. Use of the marked image during a neurosurgical procedure

The image processed by OptimDBS is provided in DICOM format, a standard and internationally accepted format. Once downloaded, the marked MRI image may be used on any device, used for functional stereotactic targeting, compatible with this format.

The brain targets predicted by OptimDBS are indicated by white crosses, as below:



It is possible that the targets are not on the same slice in the MRI. In this case, it is necessary to navigate between the different slices of the image to find the predicted targets.

## **7. LEGAL CONDITIONS - EXCLUSION OF WARRANTY / LIMITATION OF LIABILITY**

By using this product, you agree to these terms and conditions of use. If you do not agree with the provisions set out, you are not allowed to use this product.

This instruction for use ("IFU") is a non-binding document and may be changed by RebrAln if necessary. The product shall only be used in compliance with IFU.

This IFU shall be governed by and interpreted in accordance with the laws of France. The sole jurisdiction and venue for actions, any claim or matter relating to the subject matter of this IFU and/or any product liability claim shall be submitted to the competent courts and tribunals. By using the product, the user hereby irrevocably consents to the exclusive jurisdiction of such courts.

RebrAln shall not be held liable in case:

- (I) Of incorrect use of the product and/or by untrained users.
- (II) If the product is used outside the indications for which it is intended as mentioned in the IFU in the product's box;
- (III) If the product has been modified without RebrAln's prior written consent (i.e. comprising labelling and packaging);

The Product is provided "as is" and RebrAln disclaims all warranties, express or implied, by statute or otherwise, regarding any Product, its fitness for any particular purpose, its quality, its merchantability, or otherwise. Descriptions or specifications in this publication are meant solely to generally describe the product at the time of manufacture and do not constitute any express warranties.

In no event shall RebrAln be liable under any contract, negligence, strict liability or other legal or equitable theory for (a) the cost of procurement of substitute goods, (b) any special, consequential, punitive, indirect or incidental damages or (c) lost profits or lost business revenue.

## **8. Copyrights or trademarks**

OptimDBS is the property of RebrAln.

## 9. Integrated third-party software :

This software is partly based on medInria, a multi-platform medical image processing and visualization software developed by Inria. For a full description of the copyright, disclaimer and licence, see <https://med.inria.fr/about/license>

## 10. Contact



RebrAIn  
Plateforme Technologique d'Innovation Biomédicale (PTIB)  
Hôpital Xavier Arnoz, Avenue du Haut Lévêque  
33600 PESSAC

<https://rebrain.eu/>  
[support@rebrain.eu](mailto:support@rebrain.eu)

CUG\_OptimDBS EN revision 1  
Review date: April 2021